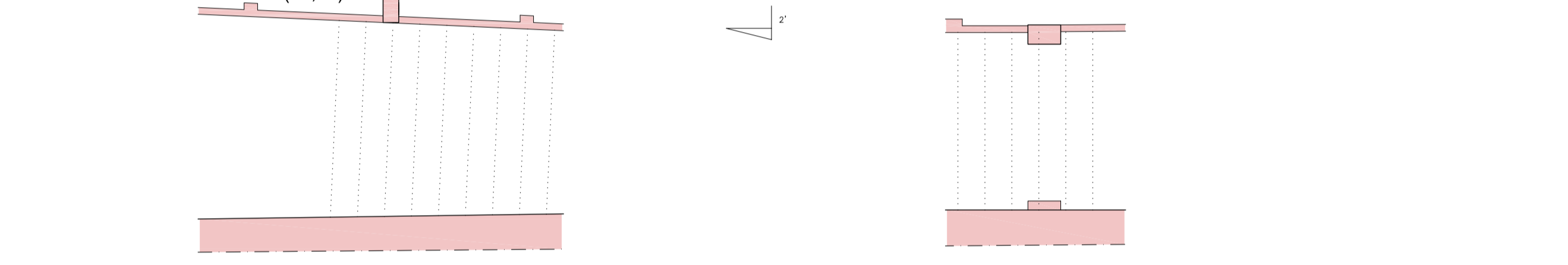




FORJADO 1 (+5,12)

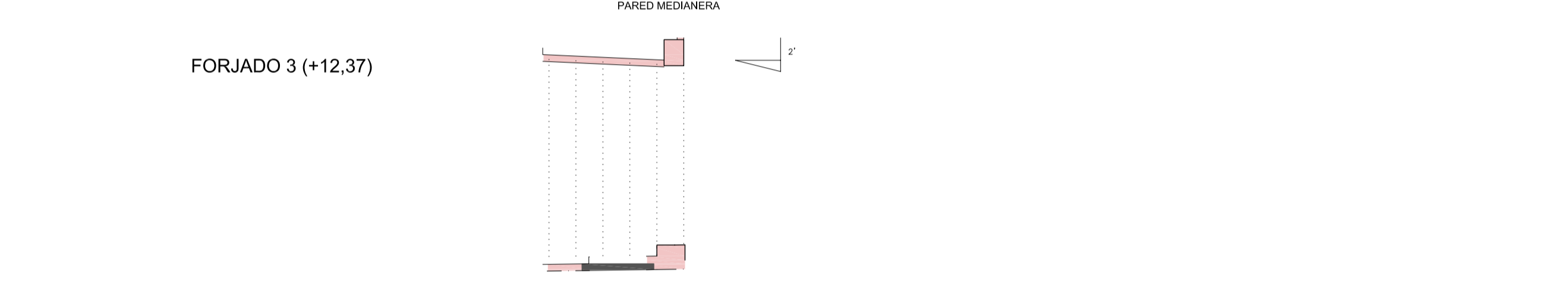


ALTILLOS 1 Y 2 (+7,47)

ALTILLOS 3 Y 4 (+7,47)



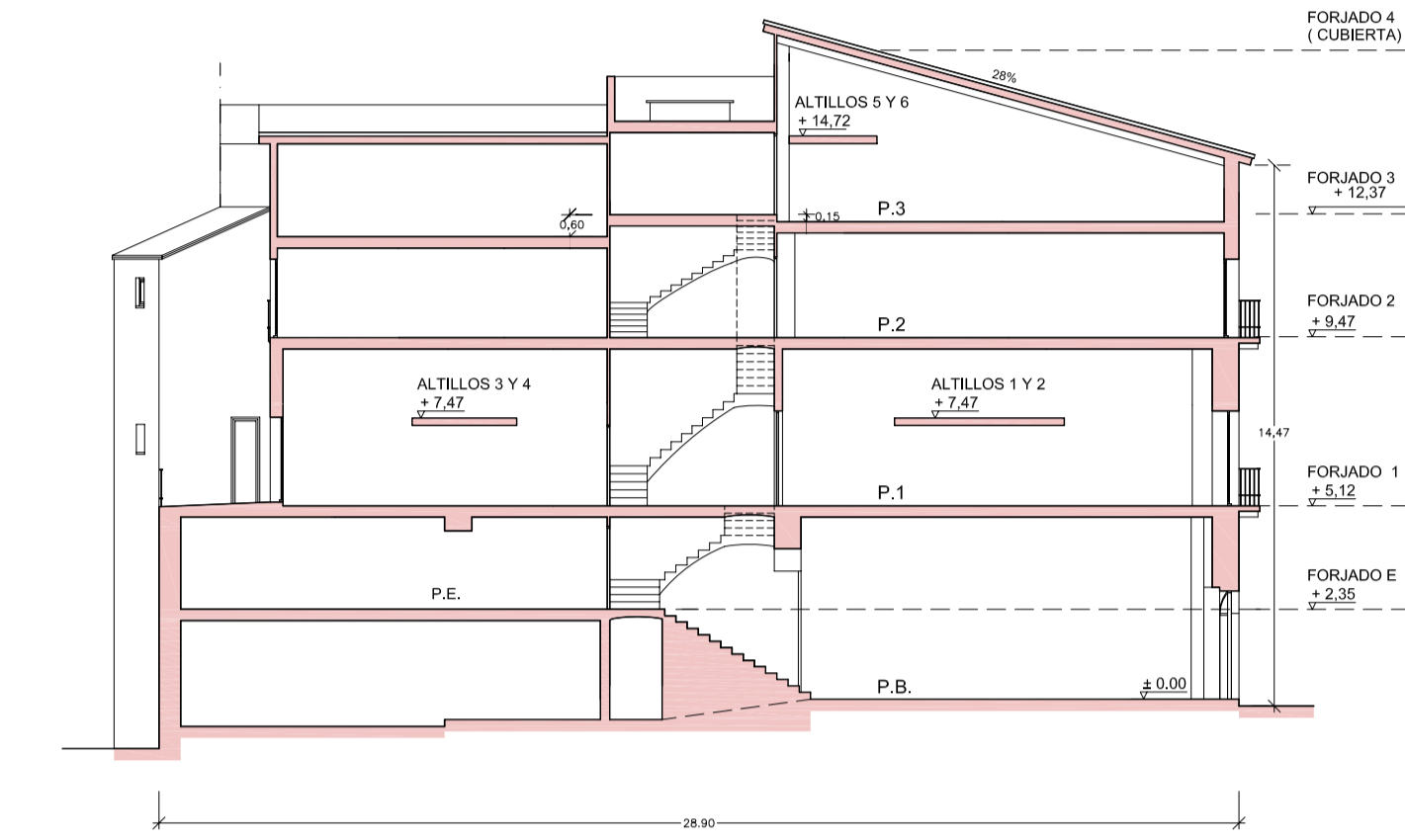
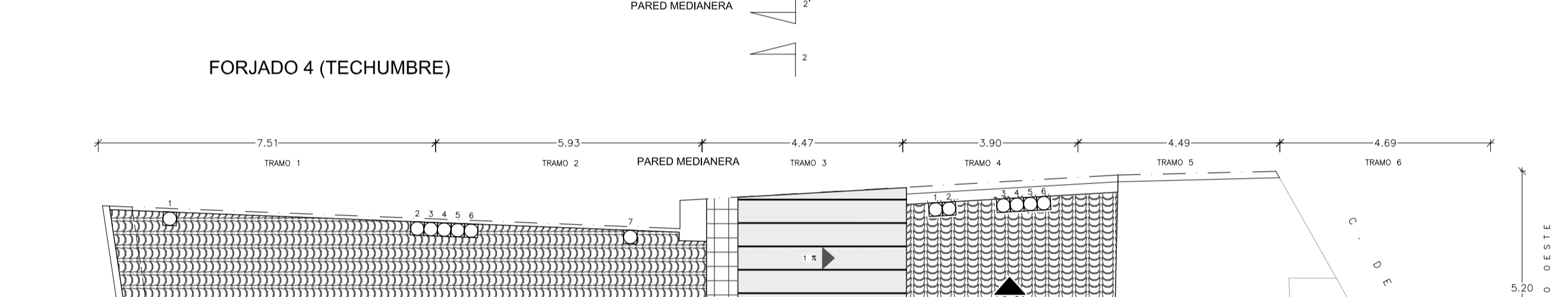
FORJADO 3 (+12,37)



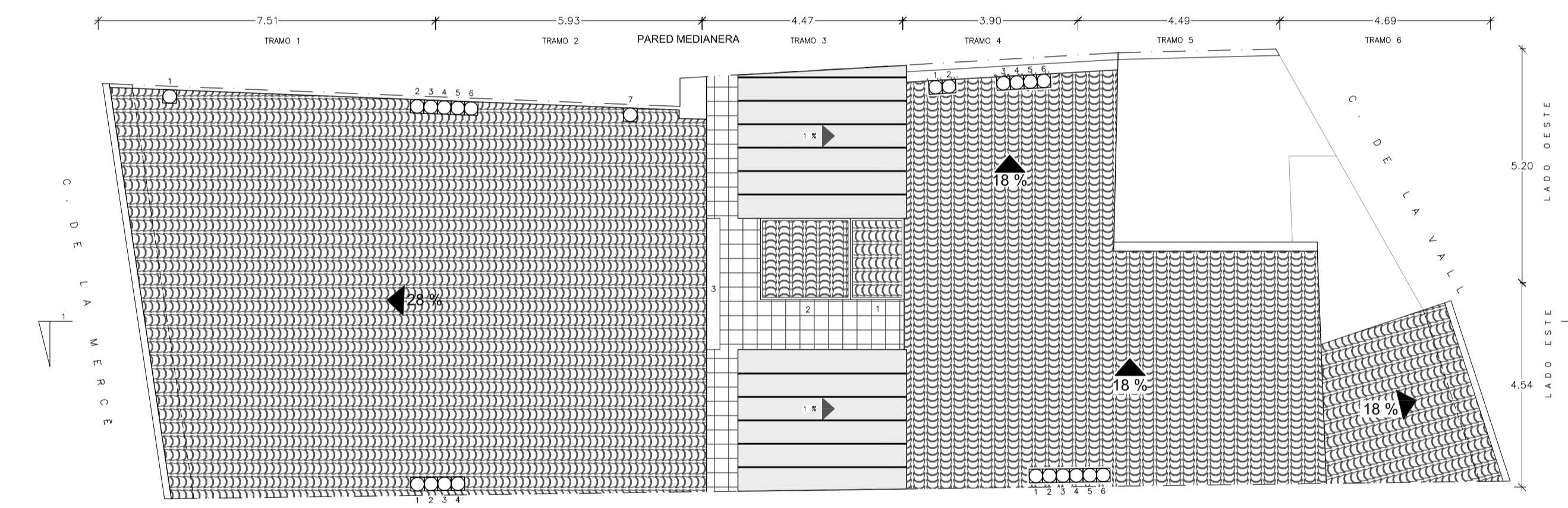
ALTILLOS 5 Y 6 (+14,72)



FORJADO 4 (TECHUMBRE)

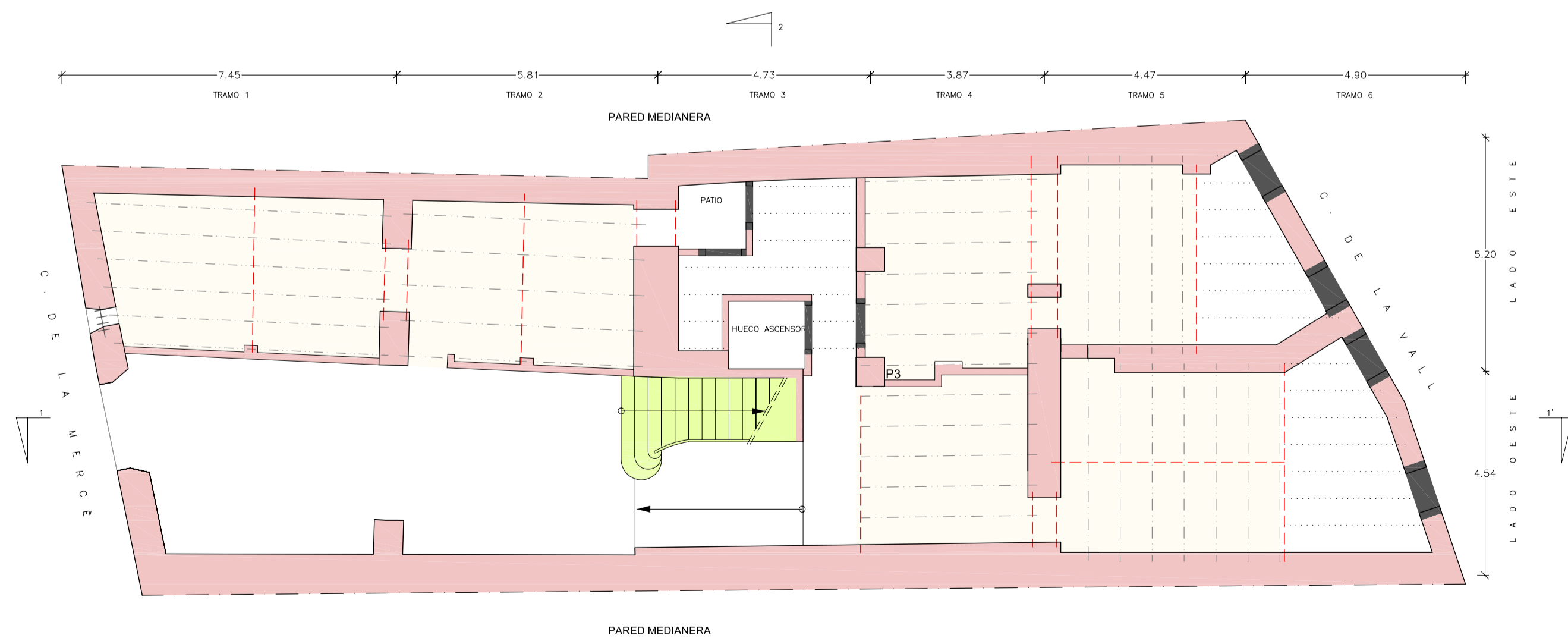


SECCION 1-1'
E/1:200

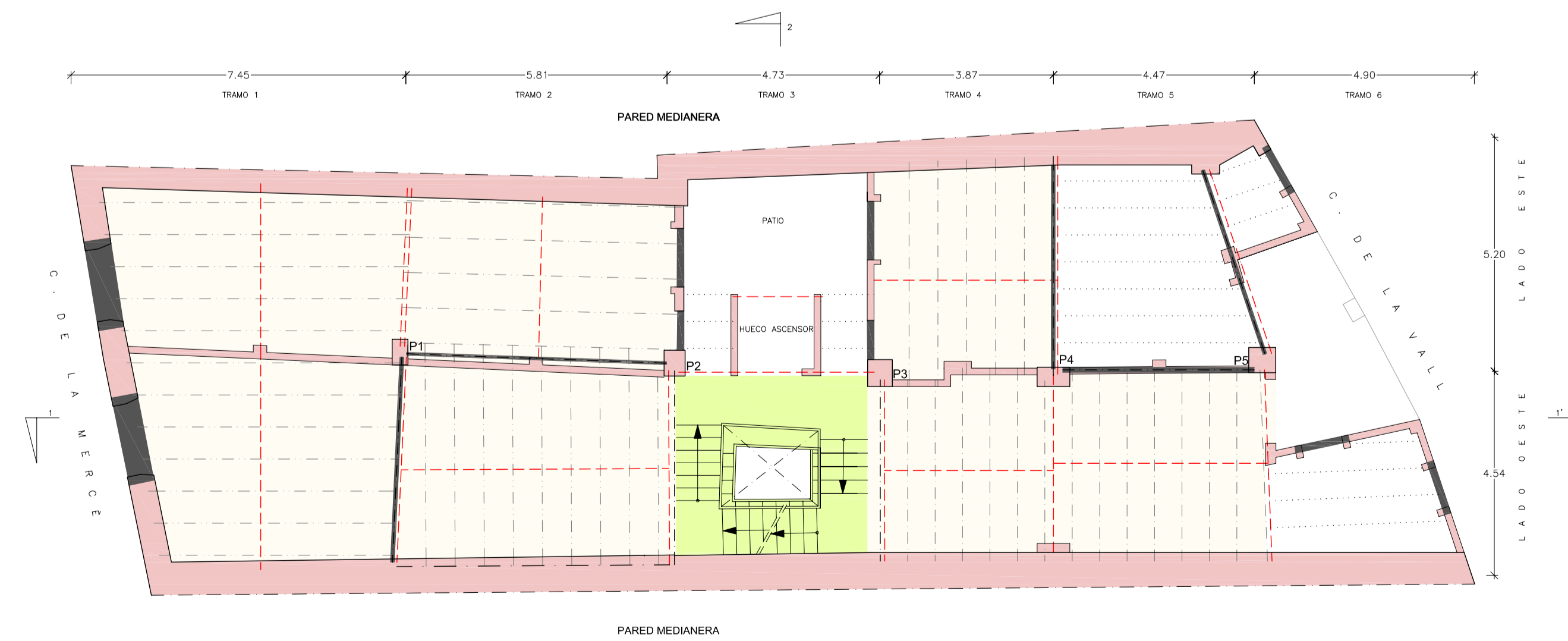


CUBIERTA

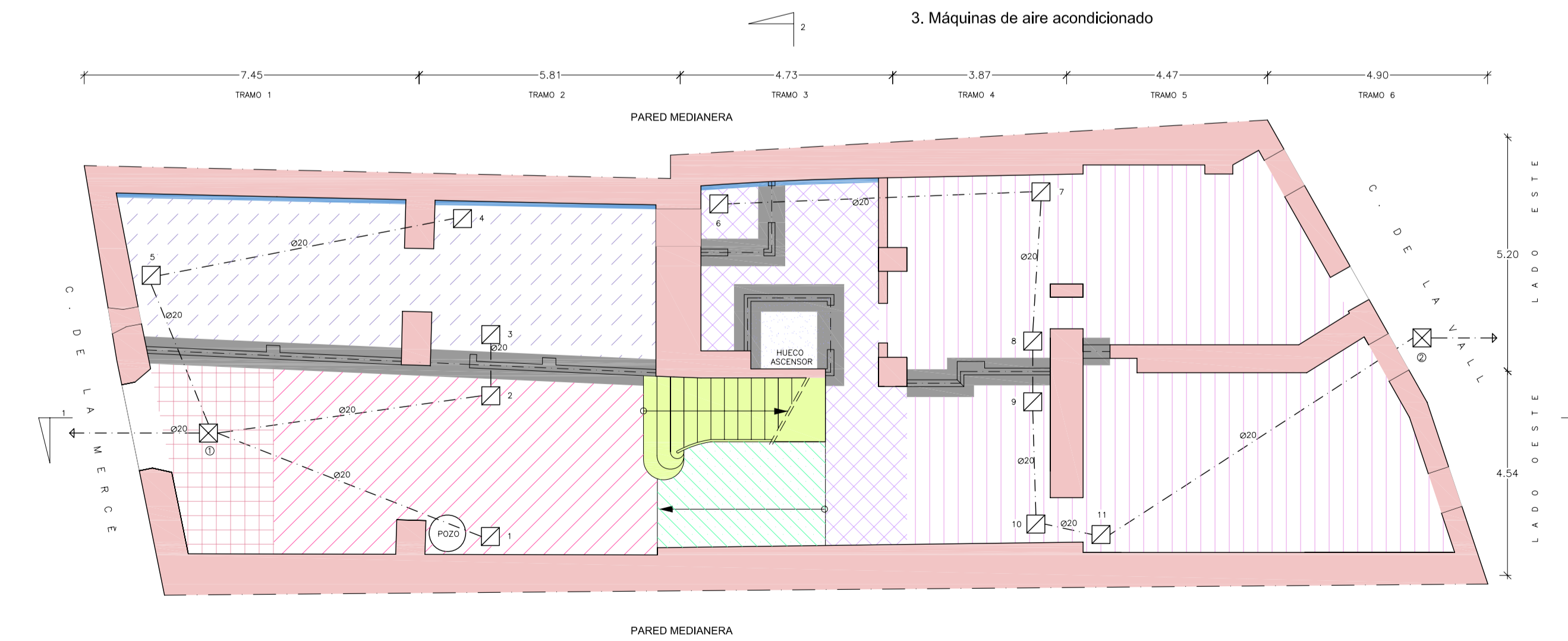
1. Caseta de salida a la cubierta
2. Espacio superior sobre el ascensor (3,60 m de altura sobre la última parada)
3. Máquinas de aire acondicionado



FORJADO ENTRESUELO (+2,35)



FORJADO 2 (+9,47)



CIMENTACION (+0,00)

REBAJE DEL SUELO RESPECTO AL NIVEL ACTUAL



CIMENTACION



FORJADOS Y PAREDES RENOVADOS

